



2000-2006 MERCEDES-BENZ/CL CLASS (W215 w/ABC SUSPENSION)



2000-2006 MERCEDES BENZ S CLASS (W220 w/ABC SUSPENSION)

Congratulations on your selection to purchase an Arnott Air Suspension System. We at Arnott Air Suspension Systems are proud to offer a high quality product at the industries most competitive pricing. Thank you for your confidence in us and our product.

Proper installation is essential to experience and appreciate the benefits of this system. Please take a moment to review these installation instructions before you begin to install this system on your vehicle.

It is equally important to be aware of all necessary safety measures while installing your new Air Ride System. This includes proper lifting and immobilizing of the vehicle and isolation of any stored energy to prevent personal injury or property damage.

“Engineered to Ride, Built to last”

WORK IS TO BE PERFORMED BY A FACTORY TRAINED MECHANIC; FAILURE TO DO SO MAY CAUSE DAMAGE TO THE VEHICLE. DIAGNOSTIC SOFTWARE IS REQUIRED TO RE-PRESSURIZE THE HYDRAULIC SYSTEM AFTER SHOCK INSTALLTION.



WARNING: *The hydraulic suspension system is under pressure (in excess of 200 bar, or 2900 PSI); depressurize the hydraulic system completely before starting any work. Wear protective clothing and eye protection. When disengaging hydraulic lines without first depressurizing the system, dangerous skin or eye injuries may occur. If hydraulic fluid is swallowed, this may lead to poisoning symptoms such as headache, giddiness, abdominal pain, vomiting, diarrhea, cramps and unconsciousness.*

Kit contains ONE (1) of:

PARTS LIST			
	P/N	QTY	DESCRIPTION
<input type="checkbox"/>	SK-2422	1	FRONT SHOCK ASSEMBLY, RIGHT
<input type="checkbox"/>	SK-2423	1	FRONT SHOCK ASSEMBLY, LEFT
<input type="checkbox"/>	SK-2454	1	FRONT SHOCK ASSEMBLY, RIGHT
<input type="checkbox"/>	SK-2455	1	FRONT SHOCK ASSEMBLY, LEFT
<input type="checkbox"/>	SK-2458	1	FRONT SHOCK ASSEMBLY, RIGHT
<input type="checkbox"/>	SK-2459	1	FRONT SHOCK ASSEMBLY, LEFT



2000-2006 MERCEDES-BENZ/CL CLASS (W215 w/ABC SUSPENSION)



2000-2006 MERCEDES BENZ S CLASS (W220 w/ABC SUSPENSION)

General information:

- * *Shocks not to be stored below 5 °F (-15 °C) and above 122 °F (50 °C).*
- * *Avoid damage to hydraulic lines and cables.*
- * *Removal and installation is only to be performed by full qualified personnel.*
- * *Use car manufacturer's diagnostic software.*
- * **CAUTION:** *Damage to the vehicle and shock assembly can be incurred if work is carried out in a manner other than specified in the instructions or in a different sequence.*

SHOCK REMOVAL:



The ignition must remain switched off during the shock removal and replacement.

- 1.0 Set steering to straight ahead.
- 2.0 Locate and remove the Active Body Control fuse (Figure A).

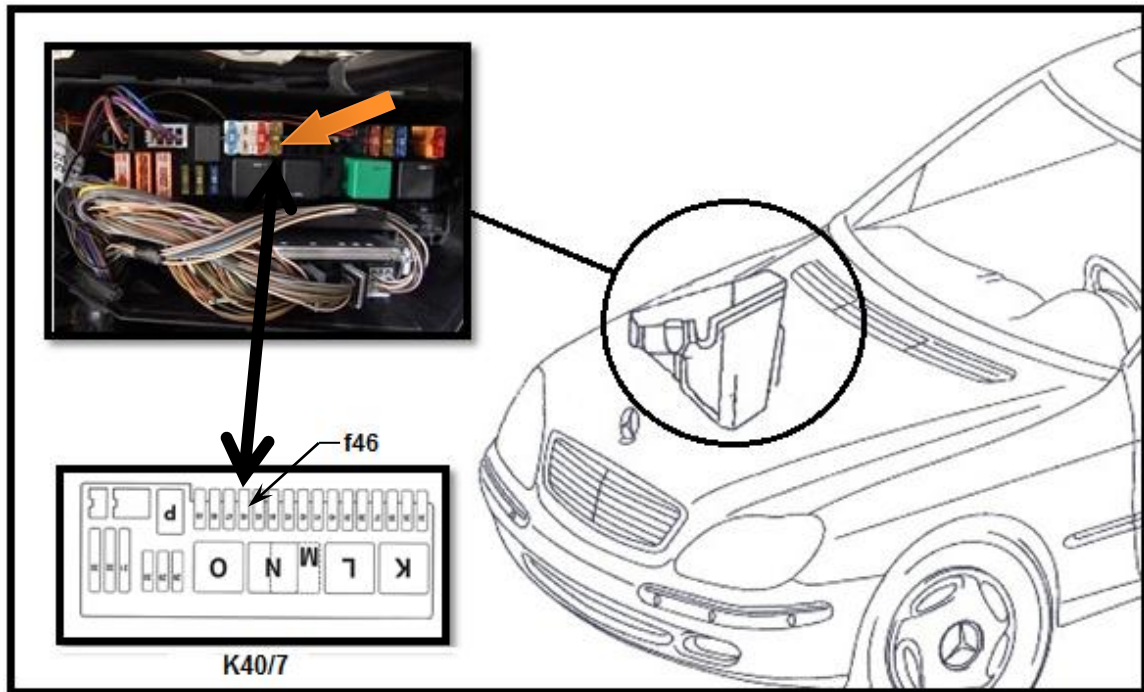


Figure A



2000-2006 MERCEDES-BENZ/CL CLASS
(W215 w/ABC SUSPENSION)



2000-2006 MERCEDES BENZ S CLASS
(W220 w/ABC SUSPENSION)



Use lifting platform (hoist) that is capable of raising the body separately from the wheels, lift body at the lifting points prescribed by the vehicle manufacturer.

Vehicle slippage can cause danger to life and limb.

- 3.0 Raise vehicle.
- 4.0 Remove front tire.
- 5.0 Remove the front bumper shroud. (Figure B).



Figure B



2000-2006 MERCEDES-BENZ/CL CLASS
(W215 w/ABC SUSPENSION)



2000-2006 MERCEDES BENZ S CLASS
(W220 w/ABC SUSPENSION)

CAUTION: HYDRAULIC SYSTEM UNDER PRESSURE.

NOTE: THE ENGINE MUST BE SHUT OFF FOR AT LEAST 5 MINUTES PRIOR TO BLEEDING.

- 6.0 Bleed off hydraulic pressure. Open bleed screw carefully so that the hydraulic fluid can drain out slowly to prevent the body dropping too rapidly (Figure C).

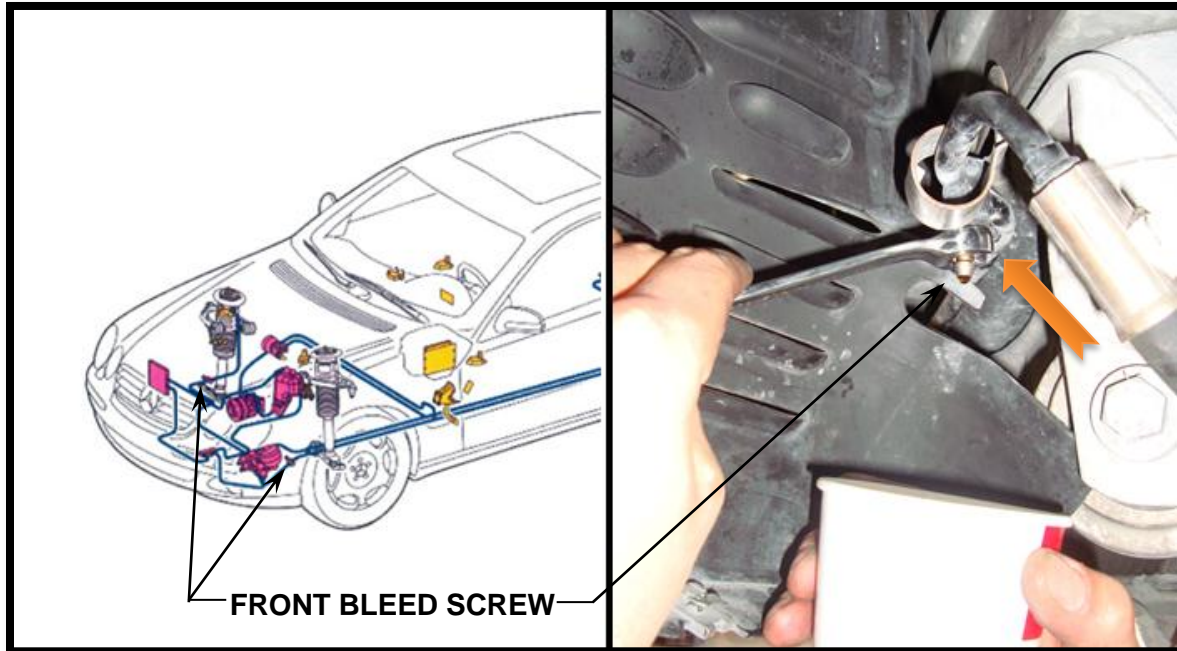


Figure C

- 7.0 Disconnect the bracket holding hydraulic line to the frame (Figure D).

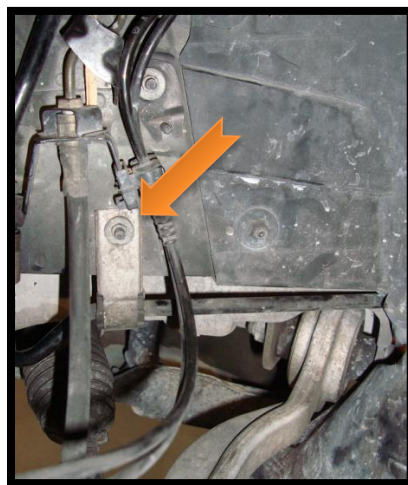


Figure D



NOTE: HYDRAULIC LINE FROM SHOCK MAY VARY IN SHAPE AND LOCATION DEPENDING ON VEHICLE YEAR.

- 8.0 Disconnect the hydraulic line quick-release coupling from the shock (ensure that no dirt enters the opened quick-release fitting) (Figure E).



Figure E

- 9.0 Loosen the two (2) set screws (180° apart) located on the bottom of the shock assembly (Figure F).



Figure F



10.0 Raise the hood and disconnect the electrical connector (Figure G).



Figure G

11.0 Remove the three (3) nuts holding the shock top mount to the vehicle (Figure H).

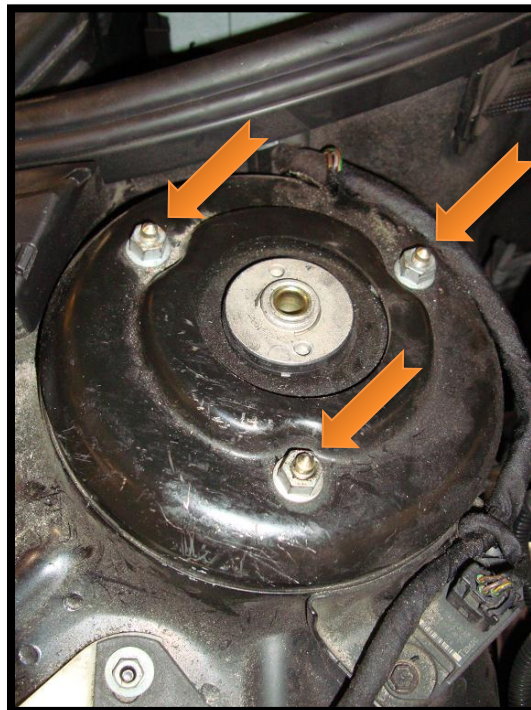


Figure H



2000-2006 MERCEDES-BENZ/CL CLASS
(W215 w/ABC SUSPENSION)



2000-2006 MERCEDES BENZ S CLASS
(W220 w/ABC SUSPENSION)

- 12.0 Remove shock.
- 13.0 Shock removal complete.
- 14.0 Installation is reverse order as removal (tighten all mounting hardware to factory specifications).
- 15.0 Fill the ABC system using MB hydraulic fluid (part number 001 989 24 03) or Pentosin CHF 11S Hydraulic fluid to the reservoir as follows (Ref. Figure I):
 - 15.1 Fill the expansion reservoir of the ABC system with hydraulic fluid using filtered funnel (part number 126 589 12 63 00).
 - 15.2 Insert dipstick all the way into the expansion reservoir, pull out, read off fluid level and correct if necessary (level to be between “min” and “max” on the “ENGINE OFF, UNLADEN” side of the dipstick).
 - 15.3 Start engine, the fluid level in the expansion reservoir must not drop below the “MIN” marking. The tandem pump must not draw air under any circumstances otherwise it can be damaged in advance due to a shortage of lubrication.
 - 15.4 Press the vehicle level control button repeatedly, continuing until both of the indicator lamps within the button go out.
 - 15.5 Insert dipstick all the way into the expansion reservoir, pull out, read off fluid level and correct if necessary (level to be between “min” and “max” on the “ENGINE ON, UNLADEN” side of the dipstick).

NOTE: WHEN BLEEDING AIR FROM THE ABC SYSTEM AND WHENEVER ALLOWING THE PUMP MOTOR TO RUN, ALWAYS ENSURE THAT THE FLUID RESIVOIR CONTAINS ADIQUATE HYDRAULIC FLUID.

NOTE: SEE THE SERVICE MANUAL FOR OTHER ABC SYSTEM BLEEDING OPTIONS.

- 16.0 Bleed the ABC system using the “RODEO” method. This method requires the use of the “STAR DIAGNOSIS” software.



2000-2006 MERCEDES-BENZ/CL CLASS (W215 w/ABC SUSPENSION)



2000-2006 MERCEDES BENZ S CLASS (W220 w/ABC SUSPENSION)

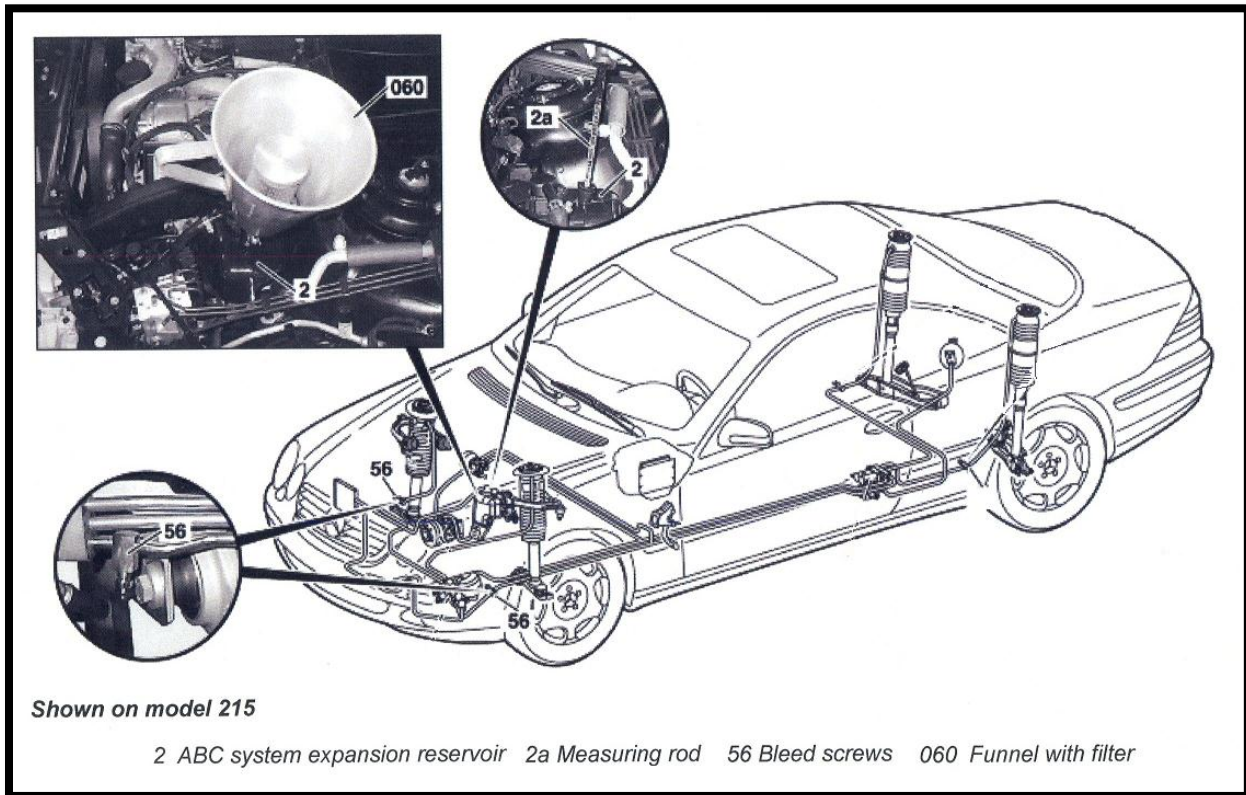


Figure I