

# Installation Manual

## AS-2560 REMANUFACTURED RIGHT FRONT AIR STRUT SUSPENSION FOR 2002-2009 AUDI A8 (COMFORT)



Congratulations on your purchase of an Arnett® air suspension product. We at Arnett Incorporated are proud to offer a high quality product at the industry's most competitive pricing. Thank you for your confidence in us and our product.

Proper installation is essential to experience and appreciate the benefits of this system. Please take a moment to review these installation instructions before you begin to install these components on your vehicle. The removal and installation of air suspension products should only be performed by a fully qualified, ASE Certified, professional.

It is equally important to be aware of all necessary safety measures while installing your new Air Suspension System. This includes proper lifting and immobilizing of the vehicle and isolation of any stored energy to prevent personal injury or property damage.

### "Engineered to Ride, Built to Last™"



**WARNING:** *The air suspension system is under pressure (up to 10 bar, or 150 lbf/in) verify pressure has been relieved and disconnect power to the air suspension system prior to disassembly. Do not allow dirt or grease to enter the system. Always wear standard protective hand, ear, and eye protection when servicing the air suspension system.*

#### KIT CONTAINS:

#### PARTS LIST

P/N	QTY	DESCRIPTION
21-4893	1	REMANUFACTURED RIGHT FRONT AIR STRUT
21-6902	1	ACCESSORY KIT

Arnett® is committed to the quality of its products. If you have a question or problem with any Arnett product, please contact Arnett by calling **800-251-8993** during normal business hours or email [techassistance@arnottinc.com](mailto:techassistance@arnottinc.com)

## GENERAL INFORMATION:

- Not to be stored below 5°F (-15°C) and above 122°F (50°C).
- Avoid damage to air lines and cables.
- Removal and installation is only to be performed by fully qualified personnel.
- Use car manufacturer's diagnostic software.

**CAUTION:** *Damage to the vehicle and air suspension system can be incurred if work is carried out in a manner other than specified in the instructions or in a different sequence.*



*The ignition must remain switched off during the air strut removal and replacement.*



*Consult your vehicles owners manual, service manual, or car dealer for the correct jacking points on your vehicle and for additional care, safety and maintenance instructions. Under no circumstances should any work be completed underneath the vehicle if it is not adequately supported, as serious injuries and death can occur.*

## AIR STRUT REMOVAL

1. SET STEERING TO STRAIGHT AHEAD.
2. LIFT VEHICLE AND REMOVE WHEEL. (FIGURE A)



FIGURE A

3. REMOVE WIRE HARNESS FROM MOUNTING BRACKET. (FIGURE B)



FIGURE B

4. DISCONNECT ELECTRICAL PLUG. (FIGURE C)



FIGURE C

5. LOOSEN AND REMOVE AIR LINE. (FIGURE D)



FIGURE D

6. LOOSEN AND REMOVE UPPER CONTROL ARM BOLT. REMOVE UPPER ARMS FROM SPINDLE ASSEMBLY. (FIGURE E)

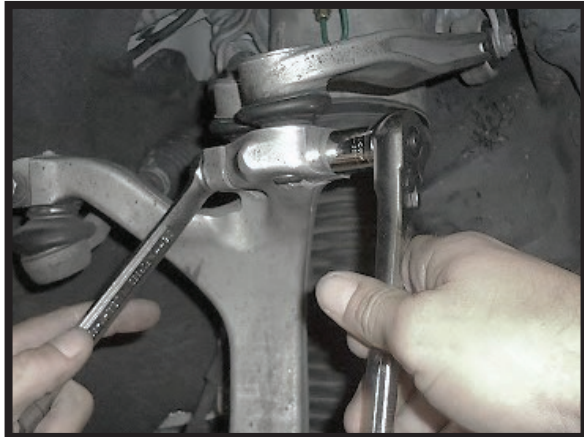


FIGURE E

7. LOOSEN AND REMOVE LOWER SHOCK ARM BOLTS. (FIGURE F)



FIGURE F

8. LOOSEN AND REMOVE ALL THREE TOP BOLTS. (FIGURE G)



FIGURE G

9. SLIDE SHOCK OVER CONTROL ARM. REMOVE SHOCK SLOWLY FROM MOUNT AREA. (FIGURE H)

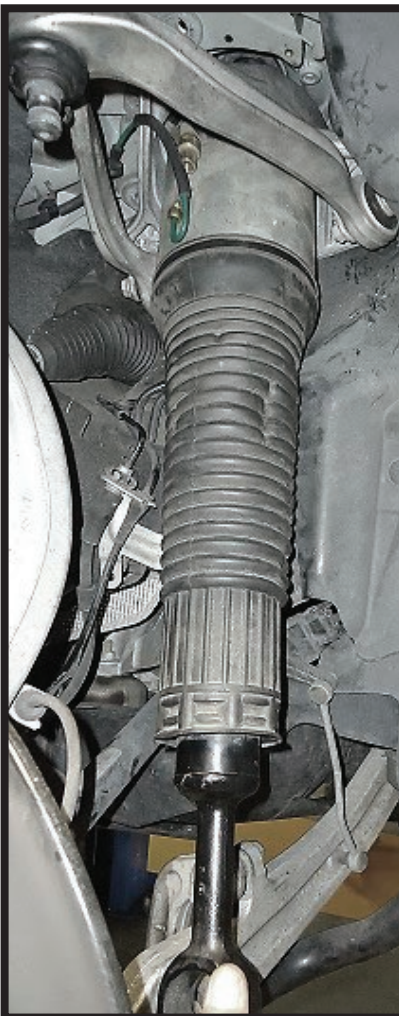


FIGURE H

10. GUIDE WIRE THROUGH THE HOLE WHILE REMOVING SHOCK. (FIGURE I)

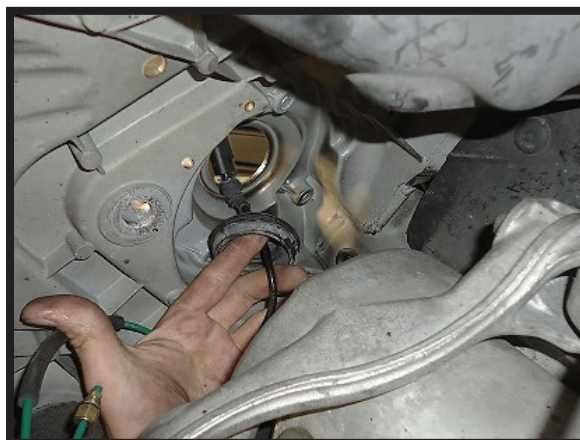


FIGURE I

11. LOOSEN AND REMOVE 4 TOP MOUNTING BOLTS FROM SHOCK (FIGURE J)



FIGURE J

12. REMOVE TOP SECTION. (FIGURE K)

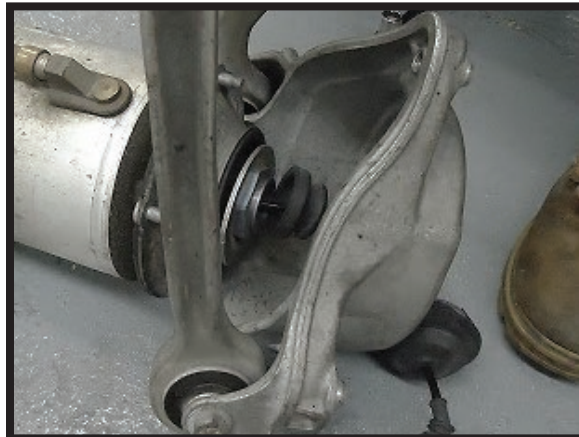


FIGURE K

## AIR STRUT INSTALLATION

1. CUT THE CABLE TIE SECURING HARNESS TO VALVE HOLDER FOR SHIPPING PURPOSES. (FIGURE A)



FIGURE A

2. REMOVE 4 TOP MOUNTING NUTS. (FIGURE B)

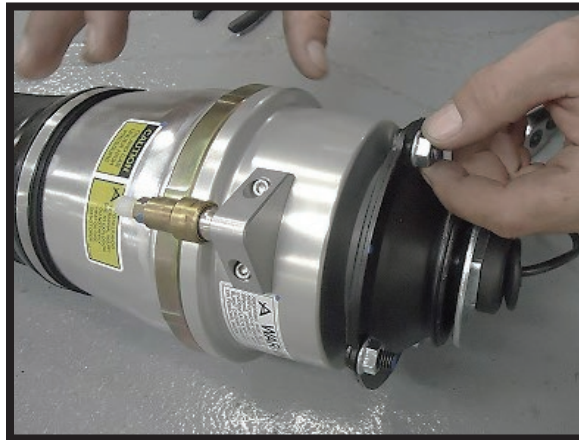


FIGURE B

3. REINSTALL TOP MOUNT. ADHERING TO THE ORIENTATION PREVIOUSLY HELD. (FIGURE C)

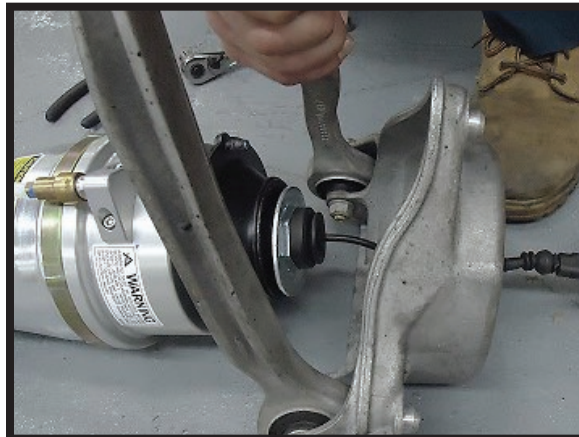


FIGURE C

4. REINSTALL SUPPLIED HARDWARE TO MANUFACTURER'S SPECIFICATIONS. (FIGURE D)

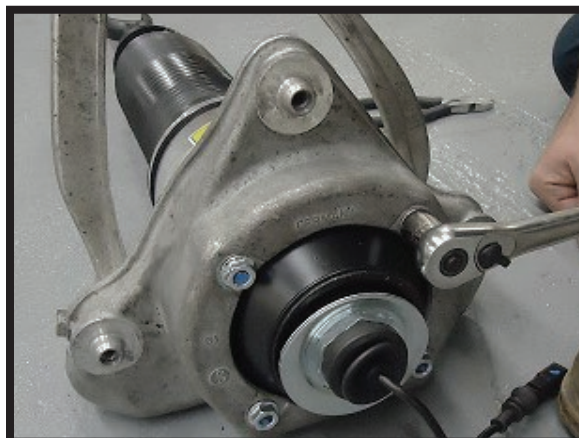


FIGURE D

5. LIFT SHOCK INTO VEHICLE. (FIGURE E)



FIGURE E

6. TIGHTEN ALL 3 TOP MOUNT BOLTS TO MANUFACTURER'S SPECIFICATIONS. (FIGURE F)



FIGURE F

7. REINSTALL LOWER CONTROL ARM BOLT AND NUT TO MANUFACTURER'S SPECIFICATIONS. (FIGURE G)



FIGURE G



8. REINSTALL CONTROL ARMS TO SPINDLE ASSEMBLY. SLIDE BOLT THROUGH, INSTALL NUT, AND TIGHTEN TO MANUFACTURER'S SPECIFICATIONS. (FIGURE H)

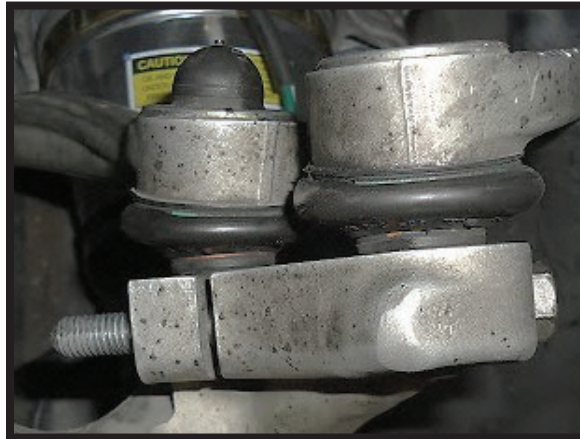


FIGURE H

9. LOCATE AIR LINE AND REMOVE COLLAR. (FIGURE I)



FIGURE I

10. REMOVE VOSS FITTING. (FIGURE J)



FIGURE J

11. REMOVE WHITE SHIPPING PIN FROM NEW VOSS FITTING. INSTALL AIR LINE INTO NEW VOSS FITTING, BE SURE TO FIRMLY SEAT THE AIR LINE INTO THE NEW FITTING. GENTLY TUG ON THE AIR LINE TO ENSURE PROPER INSERTION. (FIGURE K)

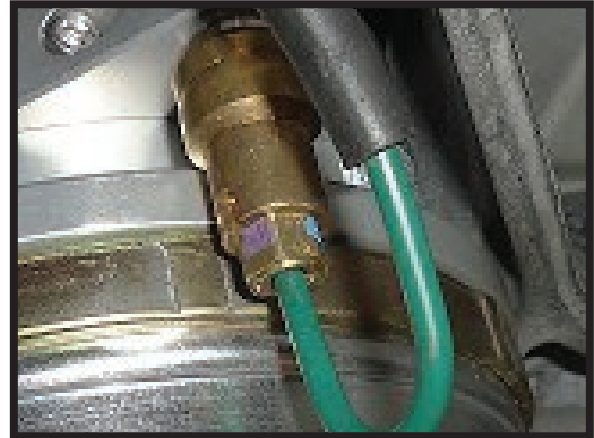


FIGURE K

12. RECONNECT ELECTRICAL CONNECTORS, AND PLACE BACK INTO HOLDING BRACKETS. (FIGURE L)



FIGURE L

13. REINSTALL WHEEL AND LUG NUTS TO MANUFACTURERS SPECIFICATIONS. (FIGURE M)



FIGURE M

14. INSTALLATION COMPLETE.